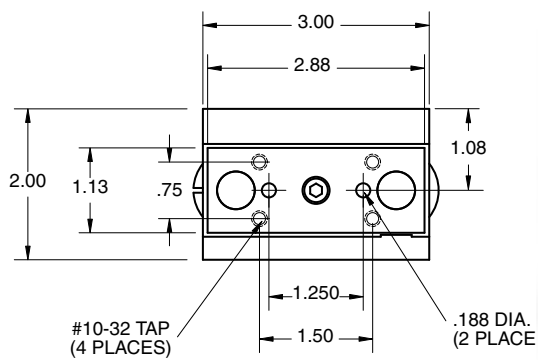


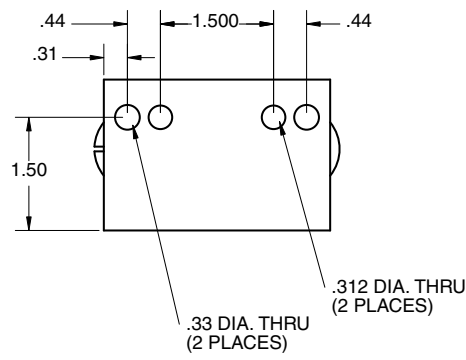
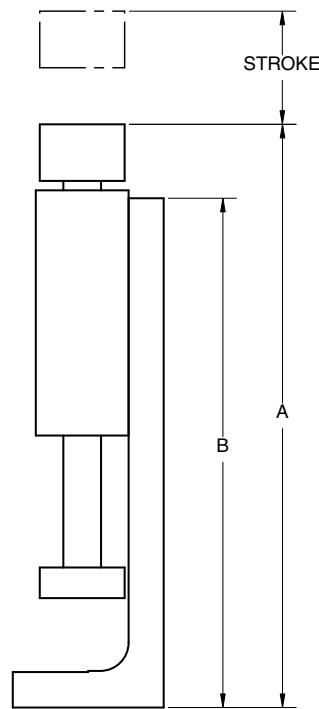
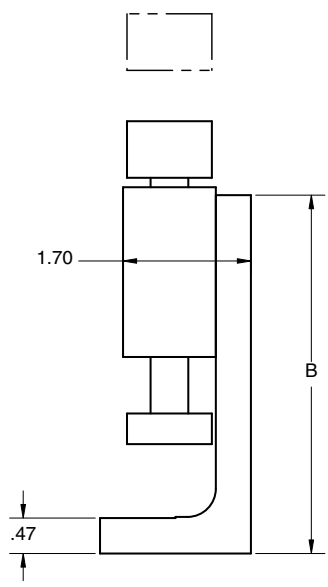
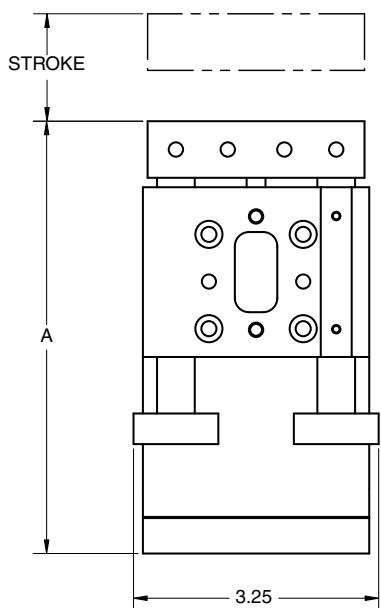
TLT-1 Tuff Lifting Table



Dimensions



See TUFF Series Slide (TFS-1) on page 62 for additional specifications.



	A	B	Stroke
TLT-1-05	5.73	4.75	.50
TLT-1-10	5.73	4.75	1.00
TLT-1-15	7.73	6.75	1.50
TLT-1-20	7.73	6.75	2.00

Technical Data

- Force @ 80 PSI = 32 lbs.
- .75" Dia. Bore
- Available strokes - 1/2", 1", 1-1/2", 2"
- Air Connection = 10-32
- Air Supply: 60-100 PSI (4-7 Bar)

Maximum Recommended Load F1 = 16 lbs.
Life expectancy for bearing wear at moderate cycles = 100 million travel inches

