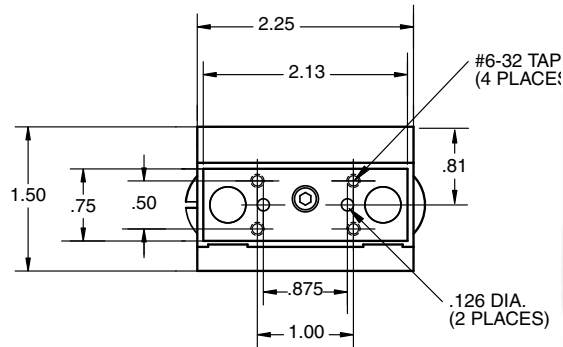


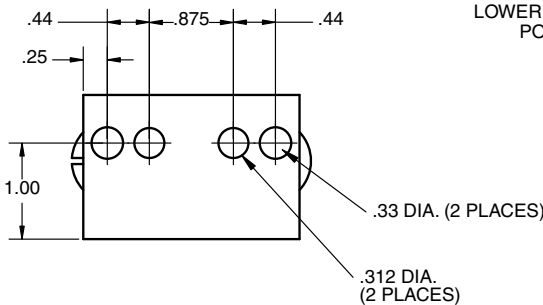
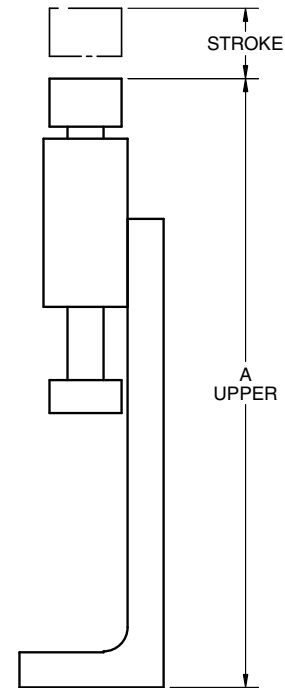
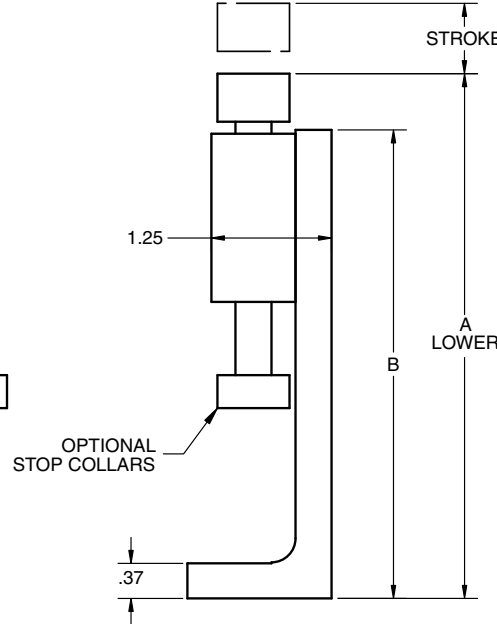
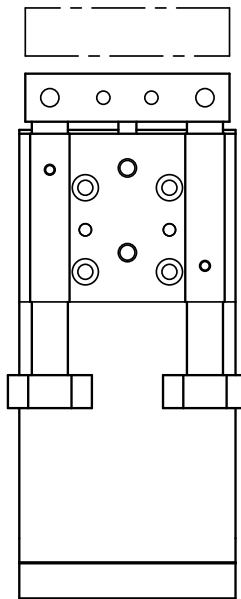
# TLT-0 Tuff Lifting Table



## Dimensions



See TUFF Series Slide (TFS-0) on page 60 for additional specifications.



LOWER MOUNTING POSITION

UPPER MOUNTING POSITION

	A Lower	A Upper	B	Stroke
TLT-0-05	5.46	6.34	4.88	.50
TLT-0-10	5.46	6.34	4.88	1.00
TLT-0-15	--	6.34	4.88	1.50

TLT-0-15 must be mounted in upper position only.

## Technical Data

Force @ 80 PSI = 15 lbs.  
 .50" Dia. Bore  
 Available strokes - 1/2", 1", 1-1/2"  
 Air Connection = 10-32

Air Supply: 60-100 PSI (4-7 Bar)  
 Maximum Recommended Load F1 = 7 lbs.  
 Life expectancy for bearing wear at moderate cycles = 100 million travel inches

