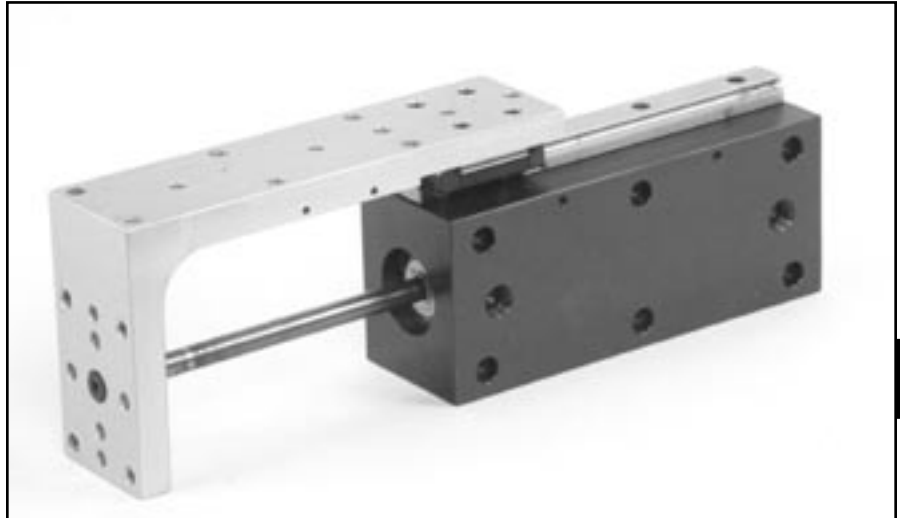
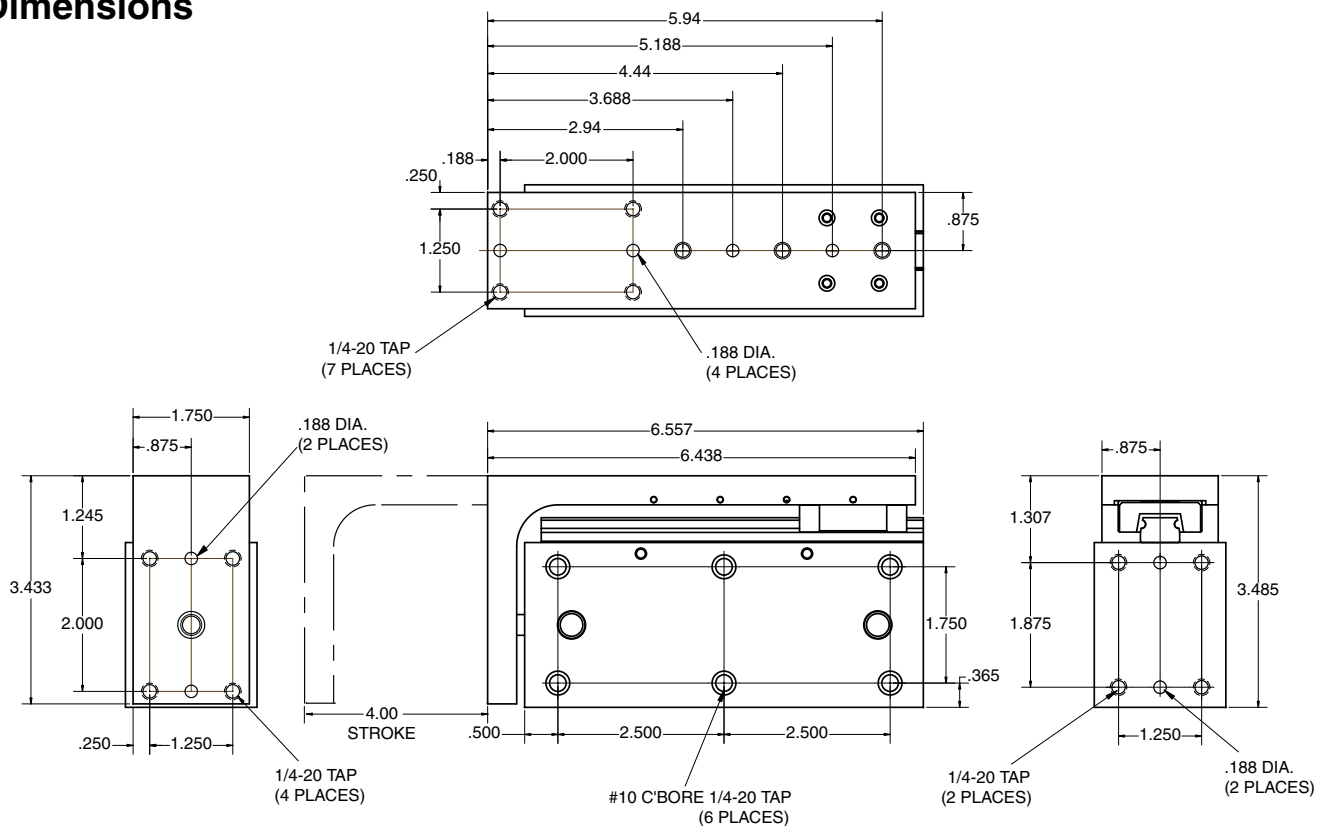


LS-2 Series Slide



E

Dimensions



Technical Data

- Force @ 80 PSI = 71 lbs.
- 1.125" Dia. Bore
- Available strokes - 2", 3", 4"
- Air Connection = 1/8 NPT
- Air Supply: 60-100 PSI (4-7 Bar)

- Maximum Recommended Load F1 for horizontal applications = 15 lbs.
- Maximum Recommended Load F2 for vertical applications = 20 lbs.
- Life expectancy for bearing wear at moderate cycles = 100 million travel inches

