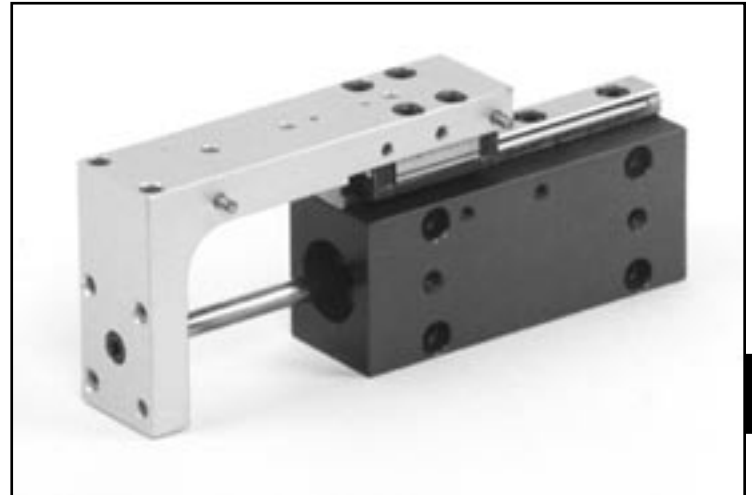
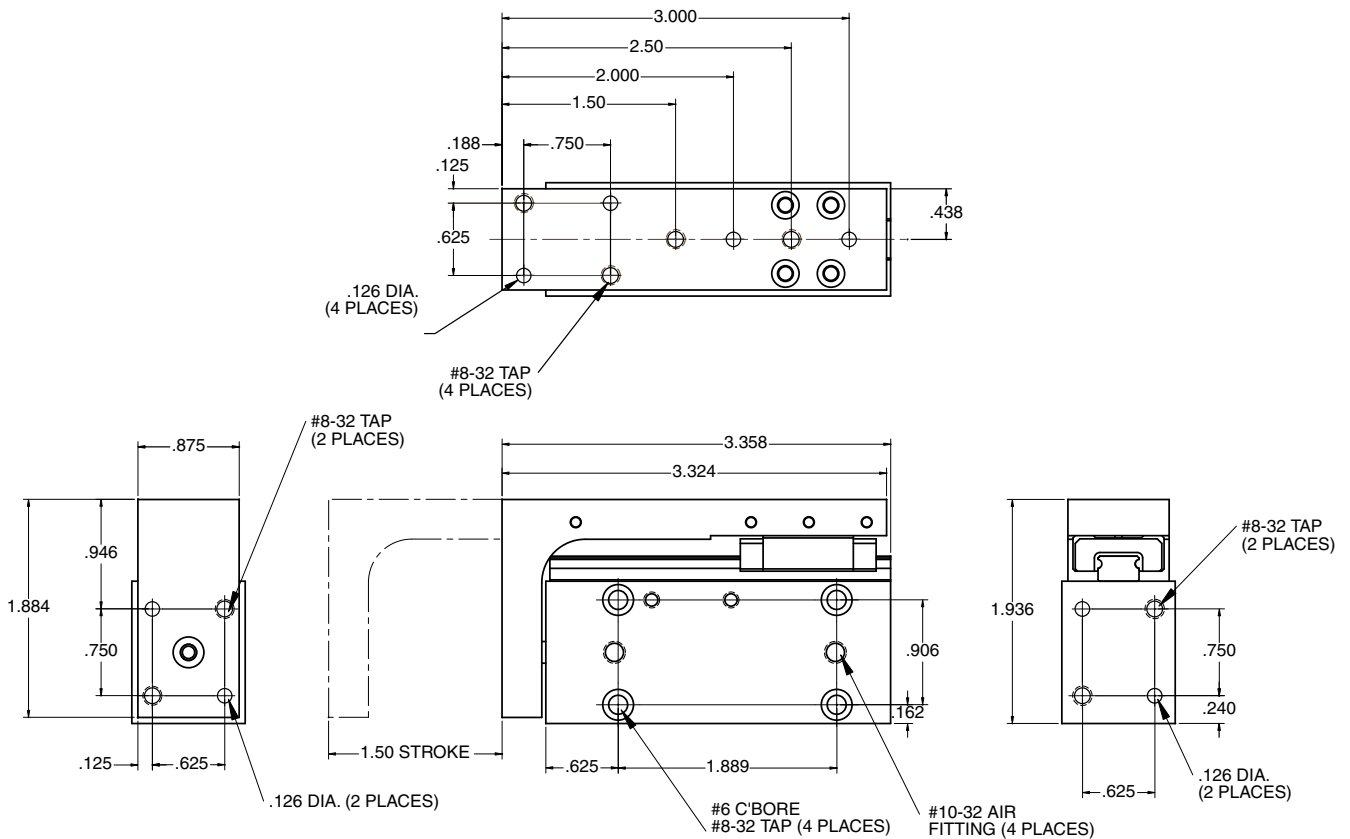


LS-0 Series Slide



E

Dimensions



Technical Data

- Force @ 80 PSI = 15 lbs.
- .50" Dia. Bore
- Available strokes - 1/2", 1", 1-1/2"
- Air Connection = 10-32
- Air Supply: 60-100 PSI (4-7 Bar)

- Maximum Recommended Load F1 for horizontal applications = 4 lbs.
- Maximum Recommended Load F2 for vertical applications = 5 lbs.
- Life expectancy for bearing wear at moderate cycles = 100 million travel inches

