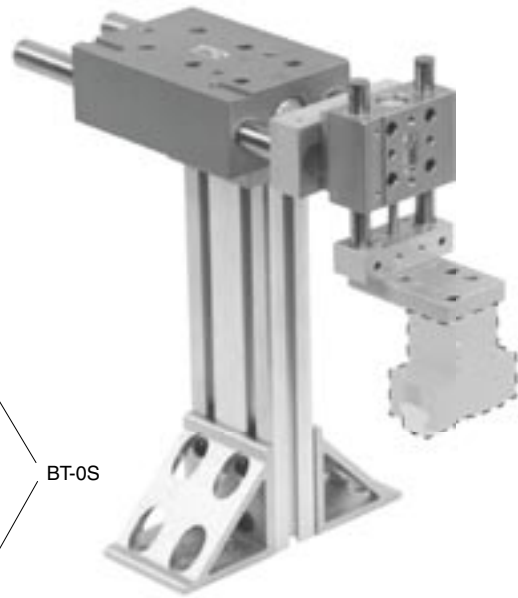
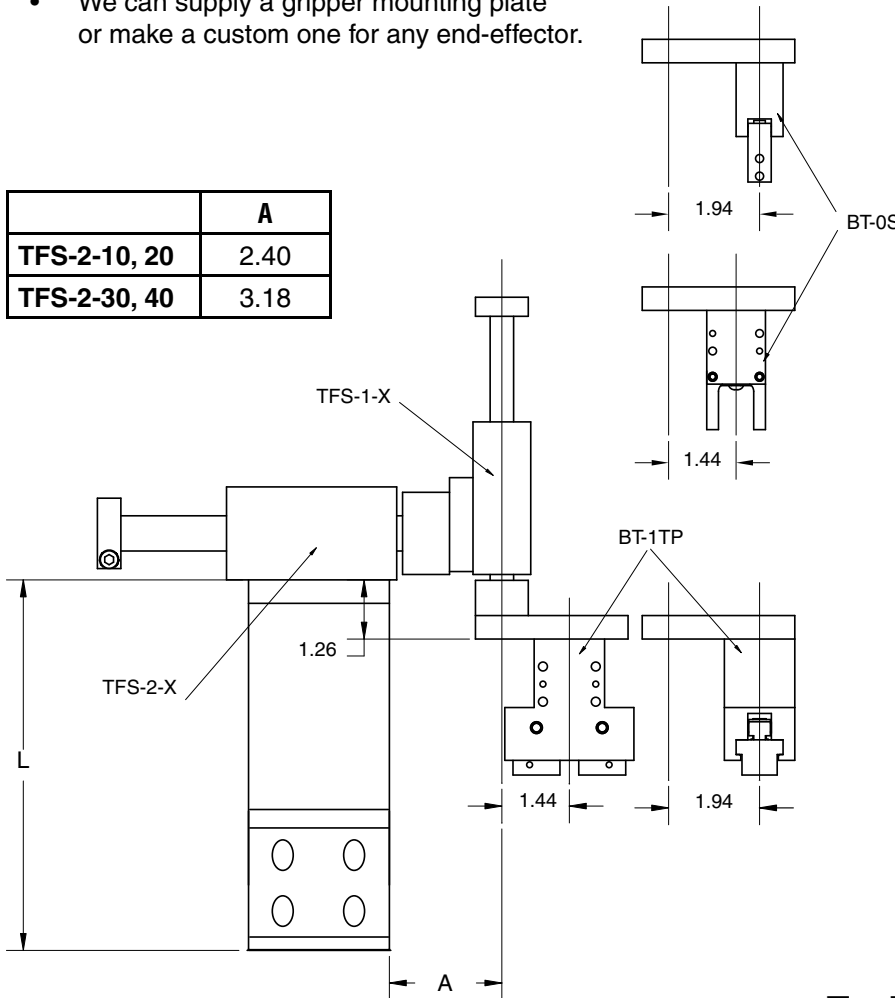


Features

- Fully assembled Pick & Place unit with all mounting components — ready to install, plumb and run.
- Components have optional sensing capabilities. (see page 143)
- Made from our standard proven precision Tuff-Series linear actuators.
- We can supply a gripper mounting plate or make a custom one for any end-effector.



	A
TFS-2-10, 20	2.40
TFS-2-30, 40	3.18



P

Ordering

The CMU-TFTF21 comes in several standard combinations. It includes stand, TFS-2, TFS-1, adapter plates, and optional gripper mounting plate, and can be ordered with the following number:

Technical Data

TFS -2 = 1 1/8" BORE
 TFS -1 = 3/4" BORE
 AIR CONNECTION = 1/8 NPT TFS-2;
 = 10-32 TFS-1
 AIR PRESSURE = 60 – 110 PSI
 RECOMMENDED LOAD = 10 lbs.

CMU-TFTF21 -

TFS-2 SIZE
10 (1.0" STROKE)
20 (2.0" STROKE)
30 (3.0" STROKE)
40 (4.0" STROKE)

TFS-1 SIZE
05 (0.5" STROKE)
10 (1.0" STROKE)
15 (1.5" STROKE)
20 (2.0" STROKE)

EX-2 HEIGHT (L)
6 THRU 18 INCHES

GRIPPER ADAPTER
N - No plate
0 - Adapt to BT-0 series gripper
1 - Adapt to BT-1 series gripper