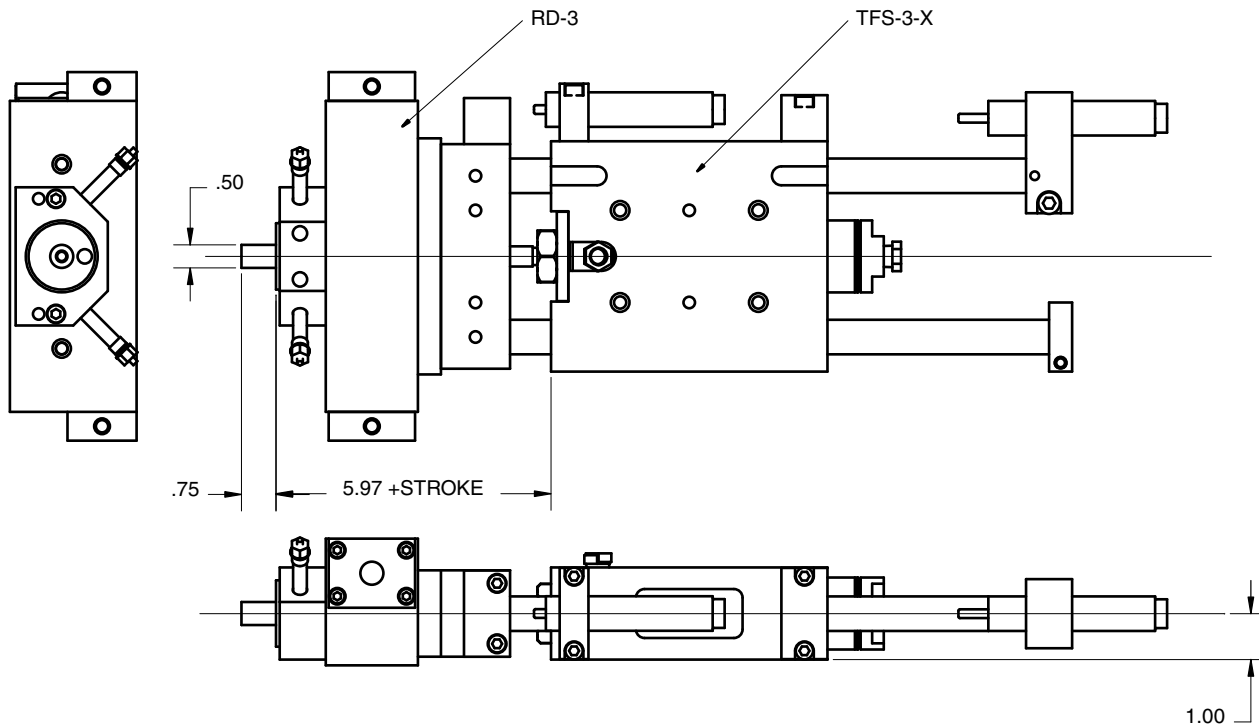
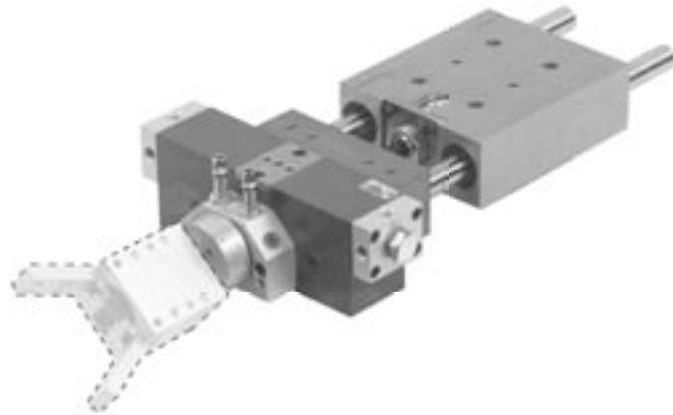


Features

- Fully assembled Pick & Place unit with all mounting components—ready to install, plumb and run.
- Rotary comes with our stopscrew system for accurate stroke adjustment and optional sensing capabilities. (see page 143)
- Made from our standard proven precision components, featuring our Tuff-Series linear actuators.
- We will supply a gripper mounting plate or make a custom one for any end-effector.



Ordering

The TFR33 comes in several standard combinations. Unit includes TFS-3-X, RD-3, adapter plate and optional gripper mounting hub. Grippers and sensors ordered separately.

Technical Data

TFS -3	= 1 1/2" BORE
RD-3	= 1 1/4" BORE
AIR CONNECTION	= 1/8 NPT
AIR PRESSURE	= 60 – 110 PSI
MAX REC. LOAD	= 20 lbs.

CMU-TFR33 - - -

TFS-3 SIZE
1.0 to 24.0" STROKE

TFS-3 BDOY
S – Short Body
L – Long Body

GRIPPER HUB
N - (No hub)
1 - (Hub adapter to BT-1 series gripper)
2 - (Hub adapter to BT-2 series gripper)
3 - (Hub adapter to BT-3 series gripper)