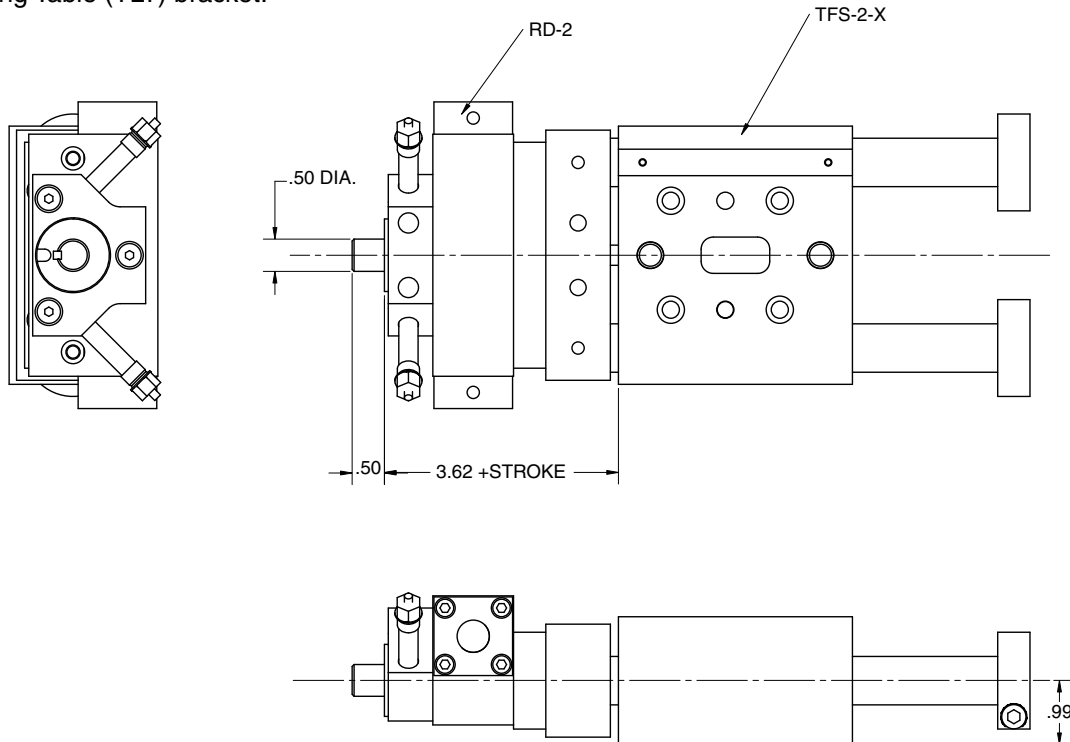
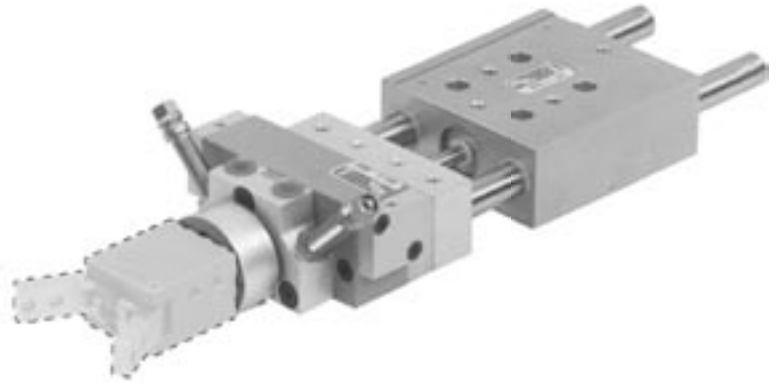


Features

- Fully assembled Pick & Place unit with all mounting components—ready to install, plumb and run.
- Rotary comes with our stopscrew system for accurate stroke adjustment and optional sensing capabilities. (see page 143)
- Made from our standard proven precision components, featuring our Tuff-Series linear actuators.
- We will supply a gripper mounting plate or make a custom one for any end-effector.
- The unit can be converted to a lifting table and rotary combination by adding a Tuff Lifting Table (TLT) bracket.



Ordering

The TFR22 comes in several standard combinations. Unit includes TFS-2-X, RD-2, adapter plate and optional gripper mounting hub. Grippers and sensors ordered separately.

Technical Data

TFS -2	= 1 1/8" BORE
RD-2	= 3/4" BORE
AIR CONNECTION	= 1/8NPT TFS-2; =10-32 RD-2
AIR PRESSURE	= 60 - 110 PSI
MAX REC. LOAD	= 8 lbs.

CMU-TFR22 - [] - [] - []

TFS-2 SIZE
 10 (1.0" STROKE)
 20 (2.0" STROKE)
 30 (3.0" STROKE)
 40 (4.0" STROKE)

GRIPPER HUB
 N - (No hub)
 1 - (Hub adapter to BT-1 series gripper)
 2 - (Hub adapter to BT-2 series gripper)

Lifting Table Option
 0 - (No Tuff Lifting Table Bracket)
 1 - (Include TLT Bracket)